



**GUARDRAIL  
WORKSHEET**

**For a "Quick Quote" with  
freight charge**

**FAX TO: 866-550-5745**

Contact Name \_\_\_\_\_

Company \_\_\_\_\_

Address \_\_\_\_\_

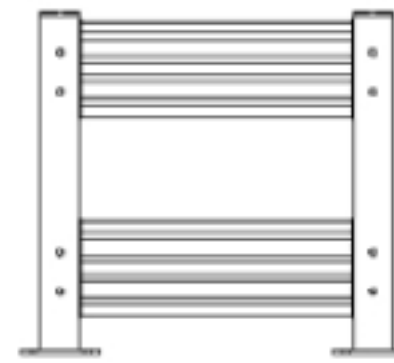
Phone \_\_\_\_\_

Fax \_\_\_\_\_

Email \_\_\_\_\_

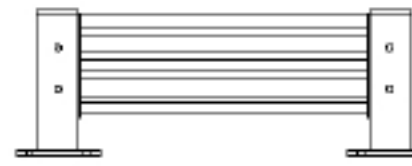
Zip Code of Destination \_\_\_\_\_

**RAIL CONFIGURATIONS (please check)**



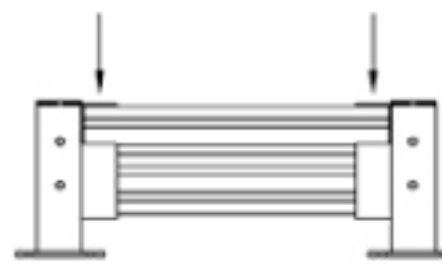
Double Rail (D)

44" high, 42" to top of rail



Single Rail (S)

17" high, 15" to top of rail



Lift-Out  
Brackets (U)

Please sketch your layout below. Beside each rail, note dimension and mark "D" for Double rail, "S" for Single rail or "U" for Lift-Out bracket. Layout will be calculated with standard nominal rail lengths of 2, 3, 4, 5, 6, 7, 8, 9, of 10 feet. Nominal rail length dimension is from center of post to center of post. We will respond within one business day with job and freight pricing. Should you need assistance with the layout, please call 1-888-432-2657.


**A-Mezz Industrial Structures, Inc.**

1-888-432-2657

FAX : 866-550-5745

EMAIL: [indsales@amezz.com](mailto:indsales@amezz.com)